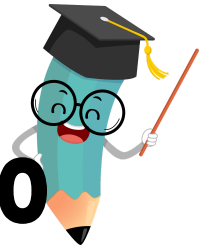


Name: _____



COUNT BACKWARDS 1-20

To extend each backward number sequence, fill in the missing numbers in each square.
If there are no more numbers following zero, mark the box with an X.

7			
---	--	--	--

14			
----	--	--	--

10			
----	--	--	--

16			
----	--	--	--

3			
---	--	--	--

9			
---	--	--	--

5			
---	--	--	--

11			
----	--	--	--

8			
---	--	--	--

4			
---	--	--	--

6			
---	--	--	--

12			
----	--	--	--

